

# COBA Building Operating System

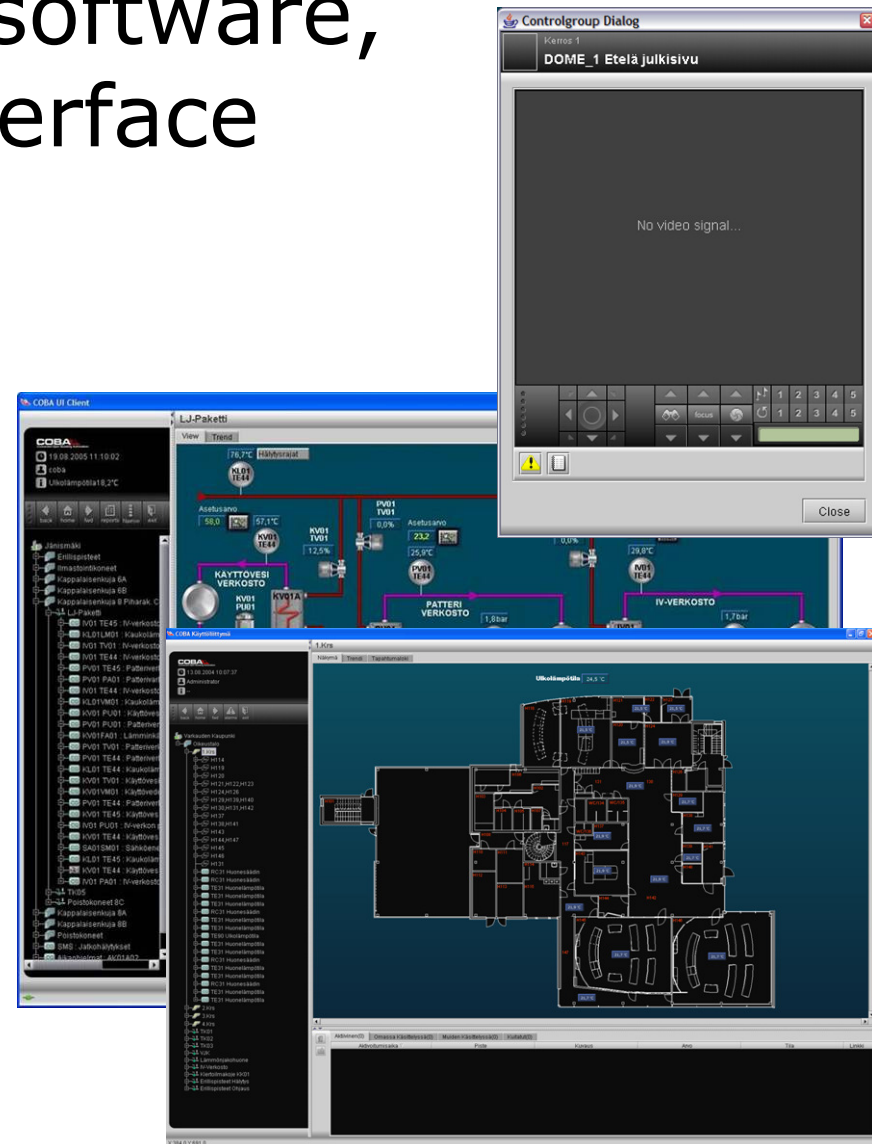
Platform for Integrated Building  
Management and Security Systems

# COBA

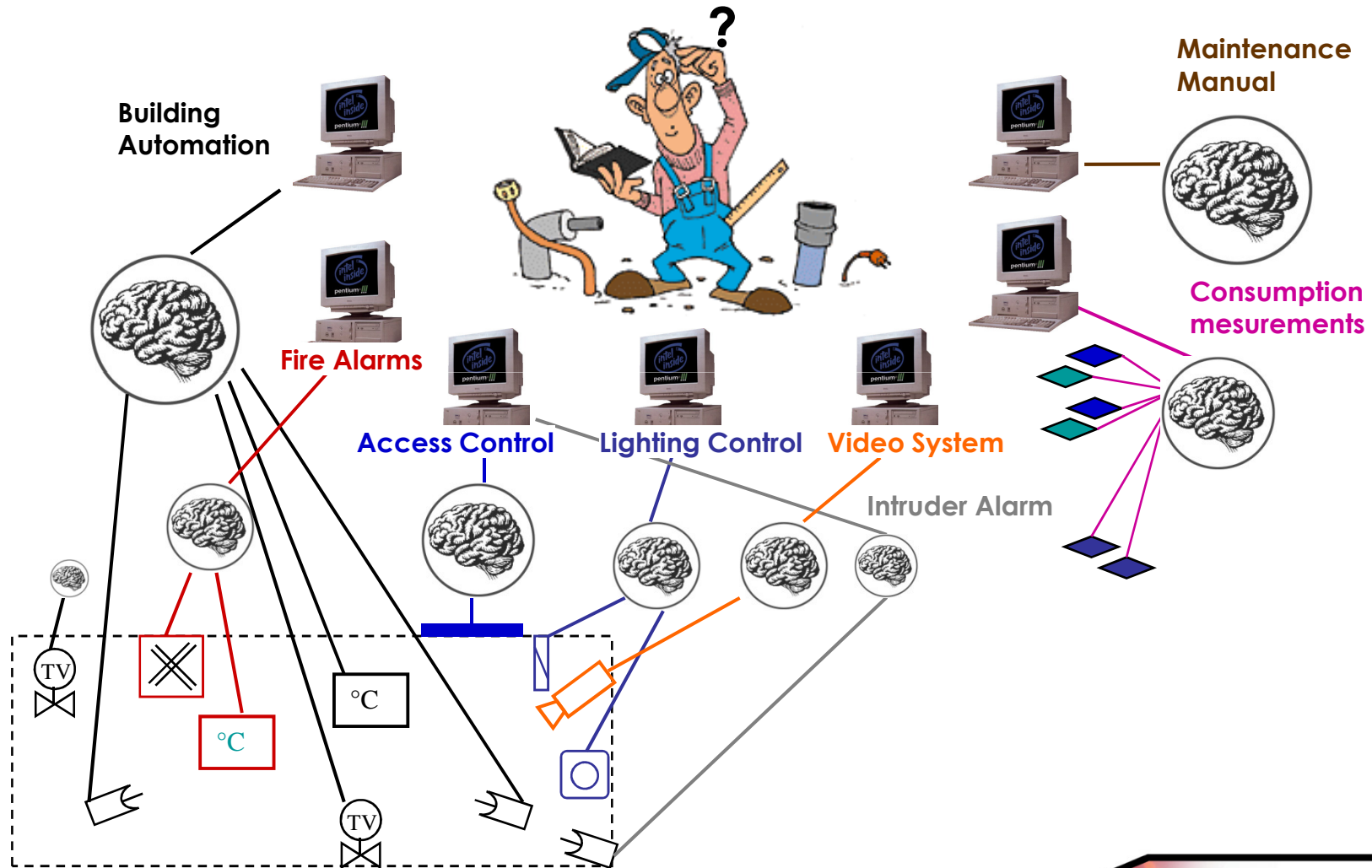
- » COBA Building Operating System
  - » One common server software
  - » One common user interface
  
- » Platform for integrated building systems
  - » Compatible systems
  - » Remote connectivity
  - » Efficient maintenance
  - » Energy optimization and trending
  - » Versatile services

# One common server software, one common user interface

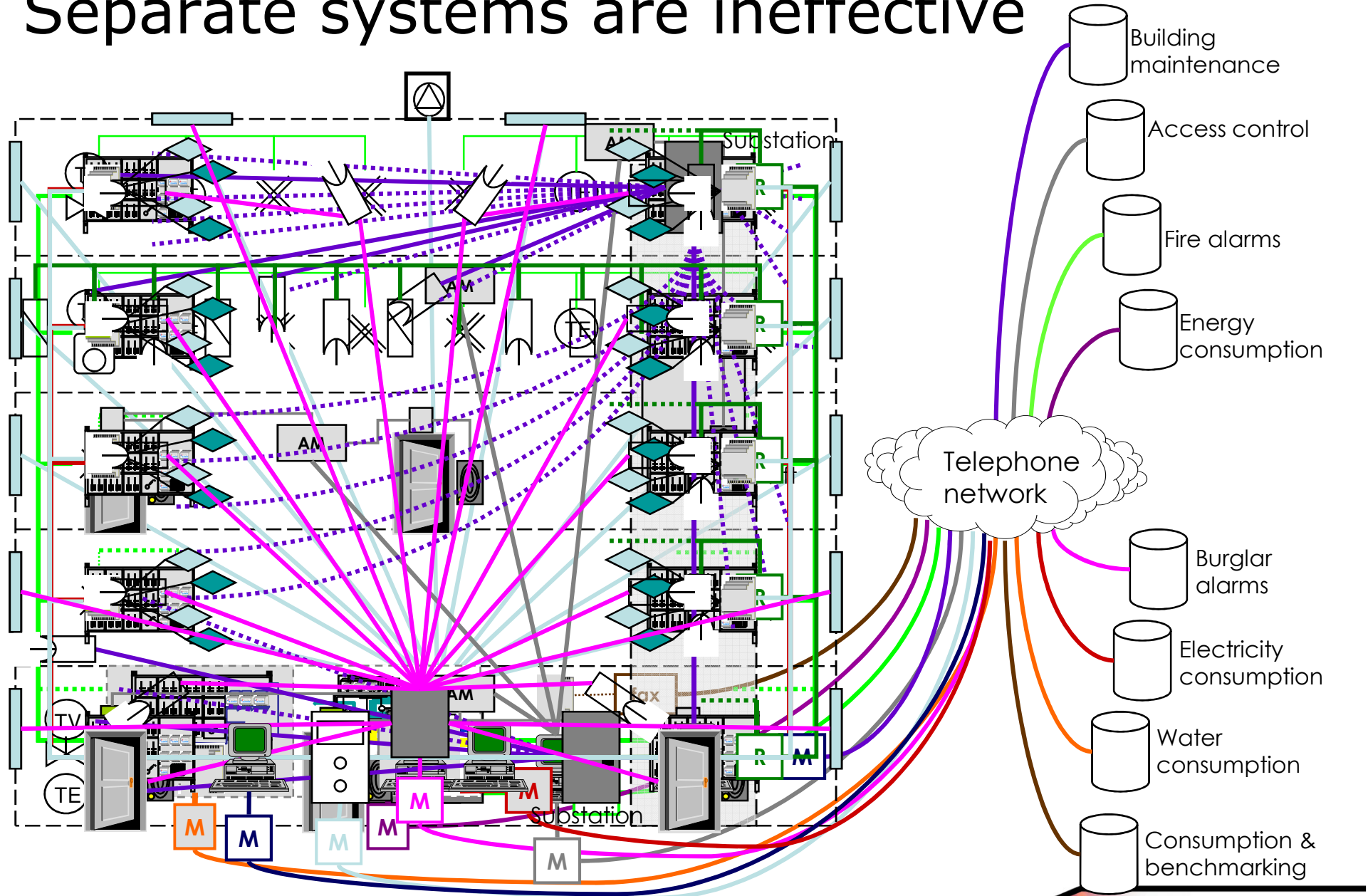
- » Heating
- » Cooling
- » Ventilation
- » Lighting
- » Emergency lighting
- » Access control
- » Video monitoring
- » Burglar alarms
- » Fire alarms
- » Leakage and humidity alarms
- » Consumption measurements



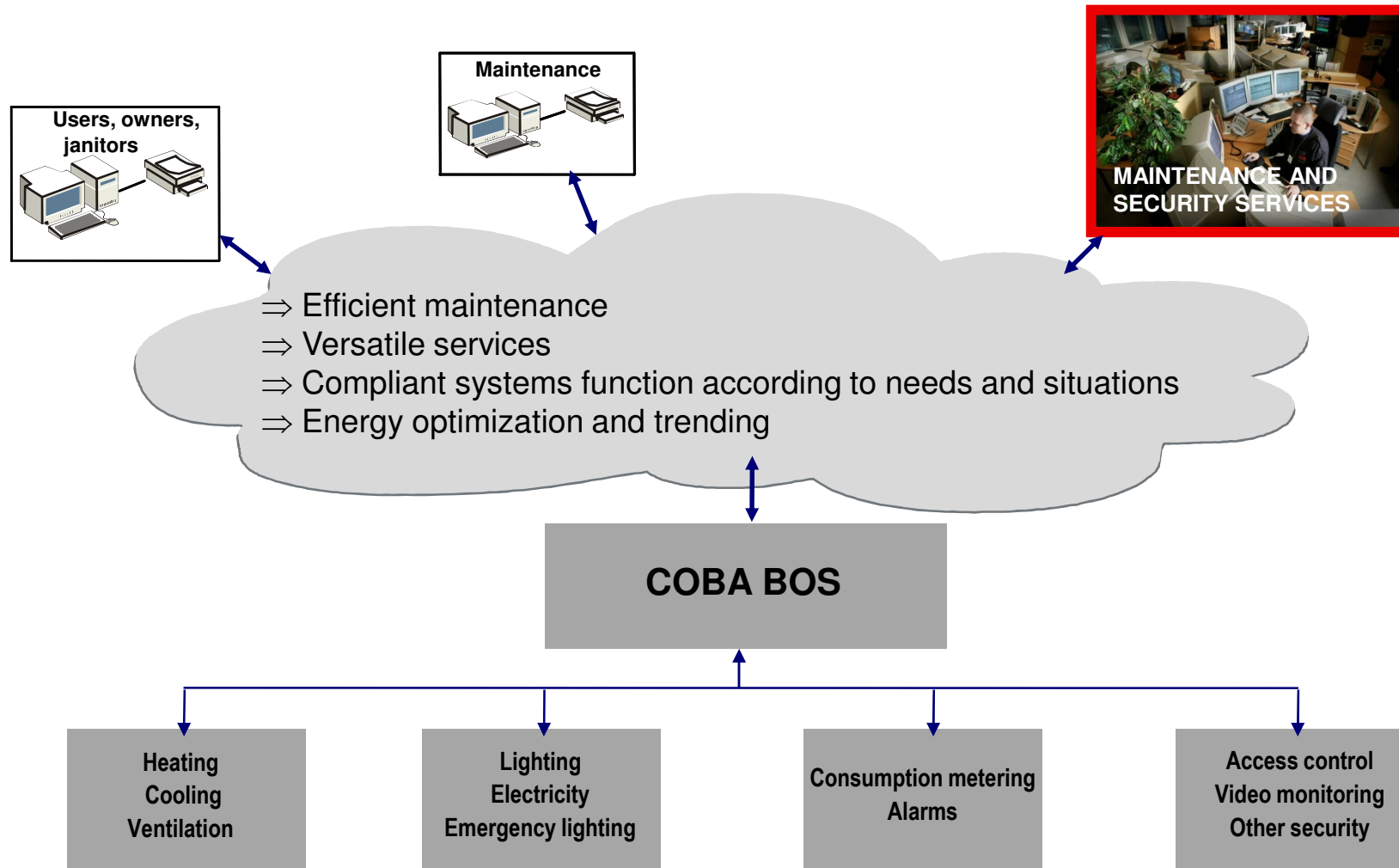
# Separate systems – difficult and expensive



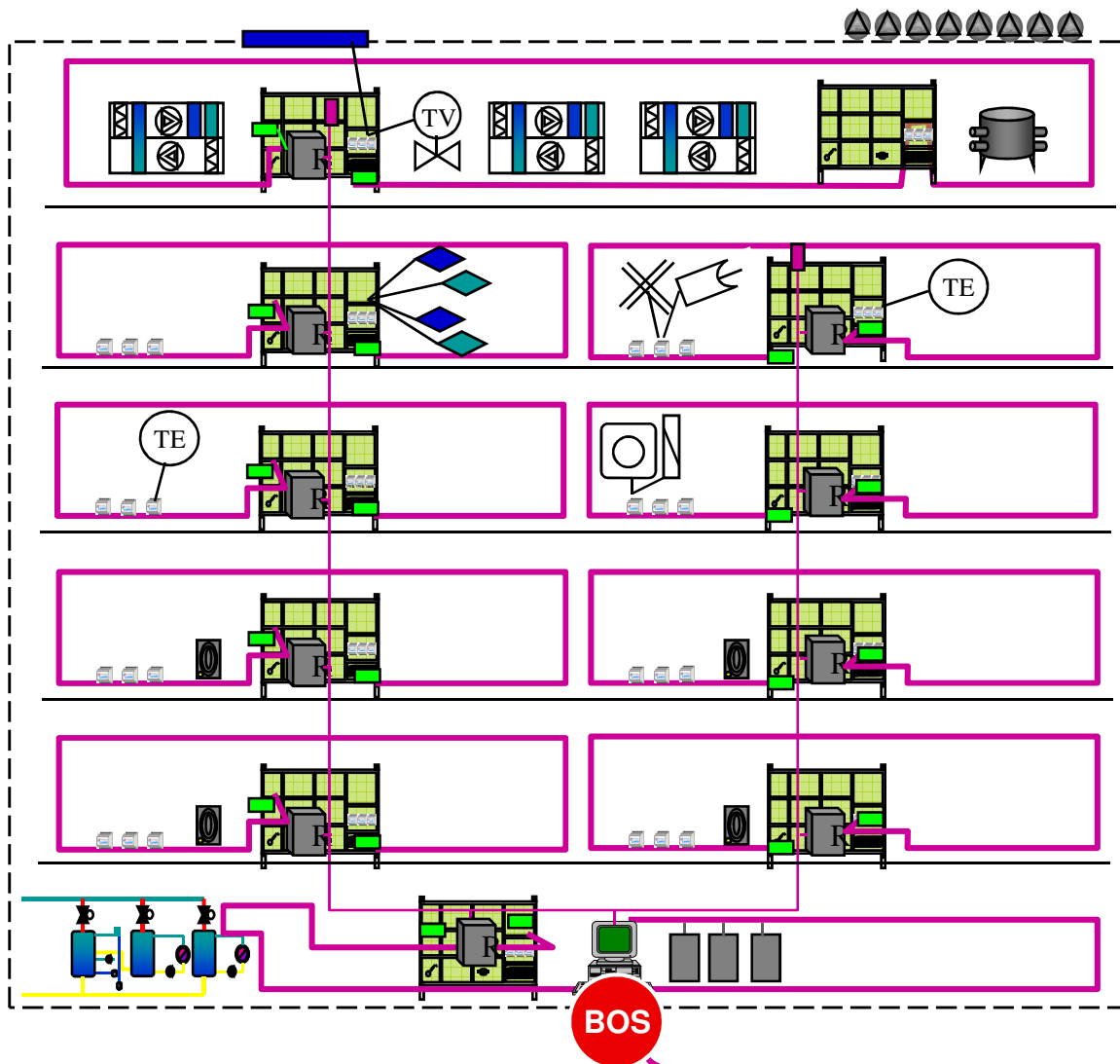
# Separate systems are ineffective



# Benefits of integrated building systems



# Integrated and intelligent systems, efficient services



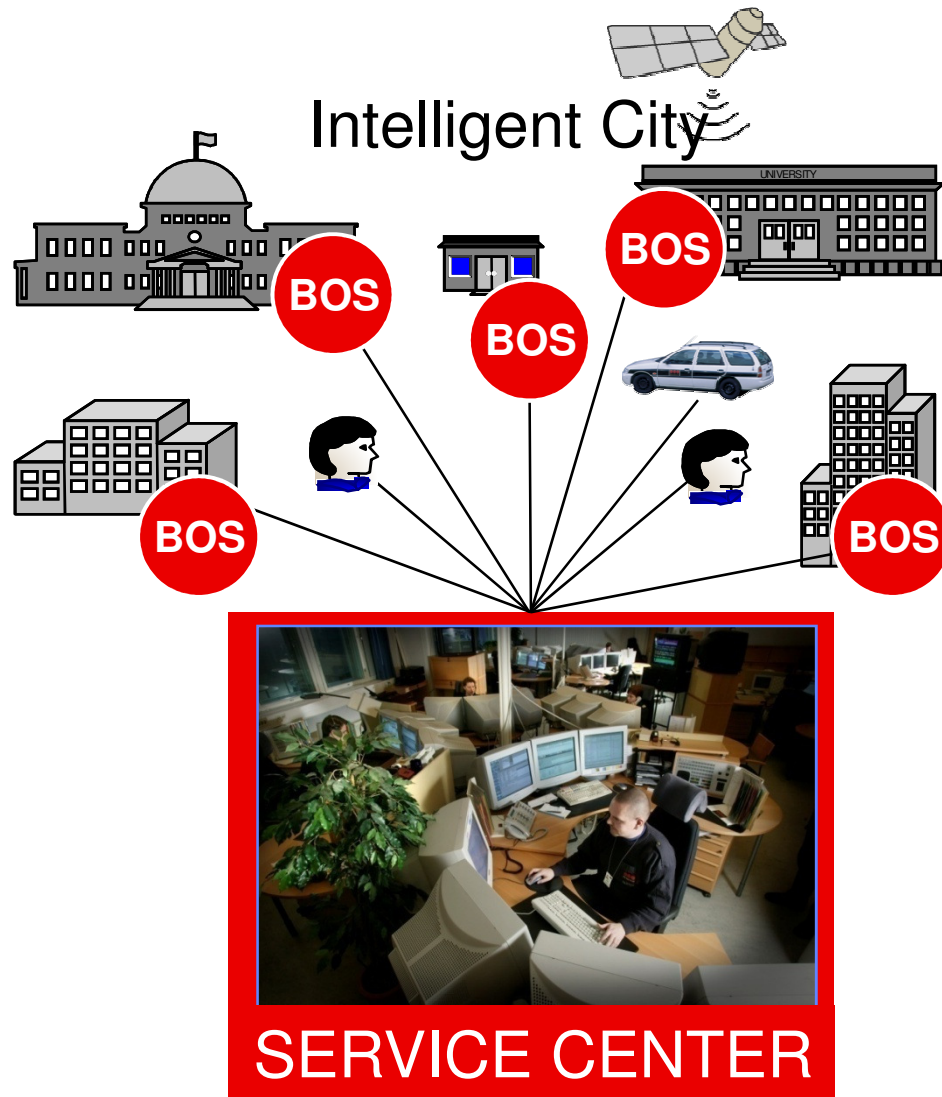
**SERVICE CENTER**

**Building maintenance  
and security services**



Internet

# Efficient service provisioning through COBA



## 1. Alarm monitoring

- Intruder alarms
- Fire alarms
- Maintenance alarms
- Advanced video monitoring
- All alarms trigger corrective action

## 2. Help desk

- Contact center

## 3. Energy optimization and trending

- Setpoint adjustment
- Control optimization
- Peak load management
- Trending
- Preventive maintenance

## 4. Consumption based billing

- Remote reading and automatic reporting
- Billing services

## 5. Remote diagnostics of all devices

- Immediate feedback from all devices
- Quick replacement of faulty units
- Regular SW updates

## 6. Tracking (option)

- Guards
- Maintenance personnel
- VIPs
- Objects

## 7. Access rights management

- Physical access rights
- Virtual access rights

## 8. Documentation and training

- All systems in common 3D model